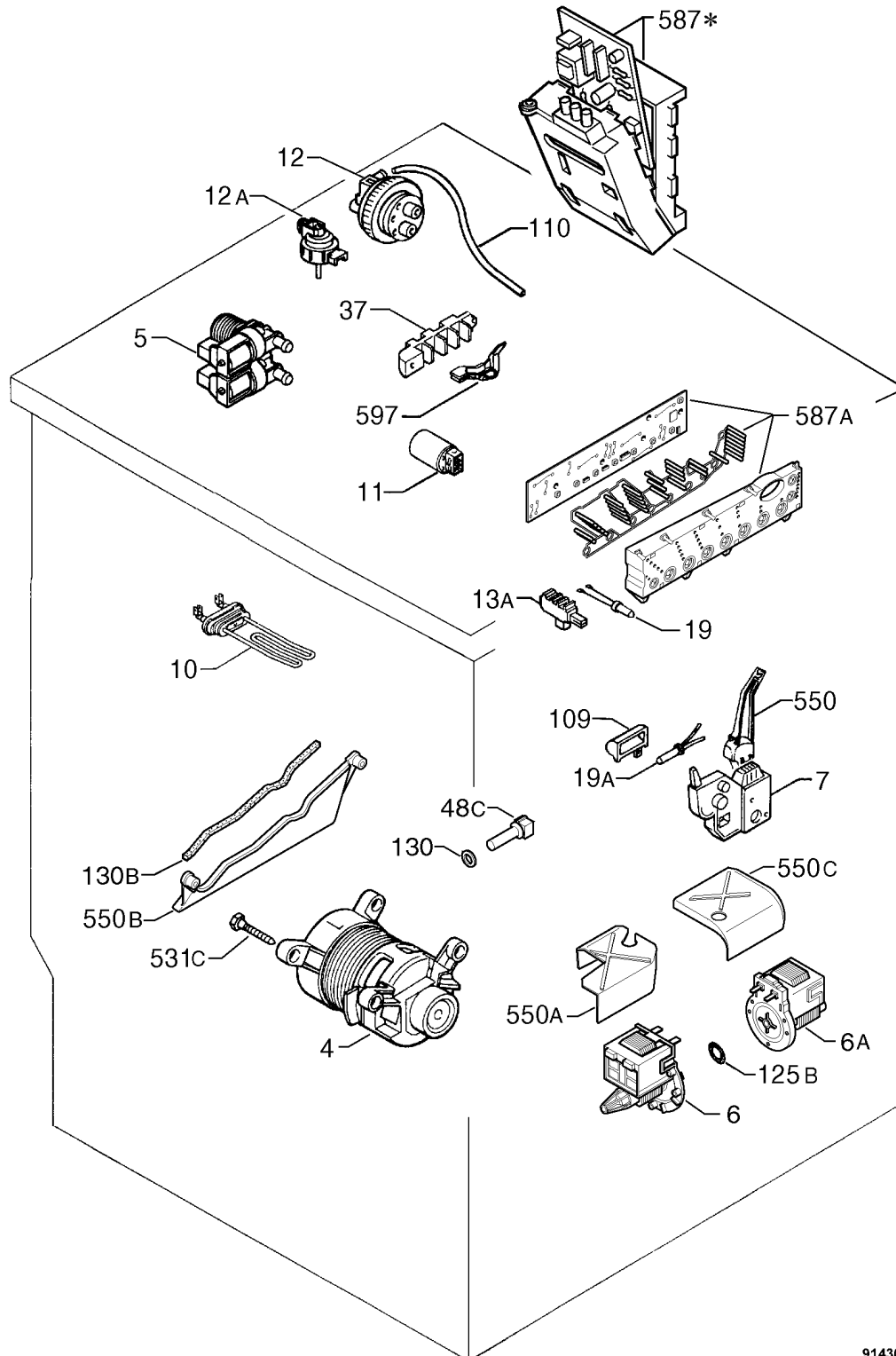


	<b>PNC</b>	<b>Brand</b>	<b>Model</b>	<b>Market</b>
A	914513029	Zanussi	IZ12	AT - CZ - HU - PL - SK

	Washing machines, front-loaded	
Electrolux-Zanussi Corso Lino Zanussi I - 33080 Porcia Italy Fax +39 (0)434 394096		Publ.No. <b>599344137</b> <b>2001/11/8</b> ZP



9143001097

**ATTENZIONE !** La scheda non è configurata. Per la configurazione utilizzare il cod. 990 (non è un ricambio).

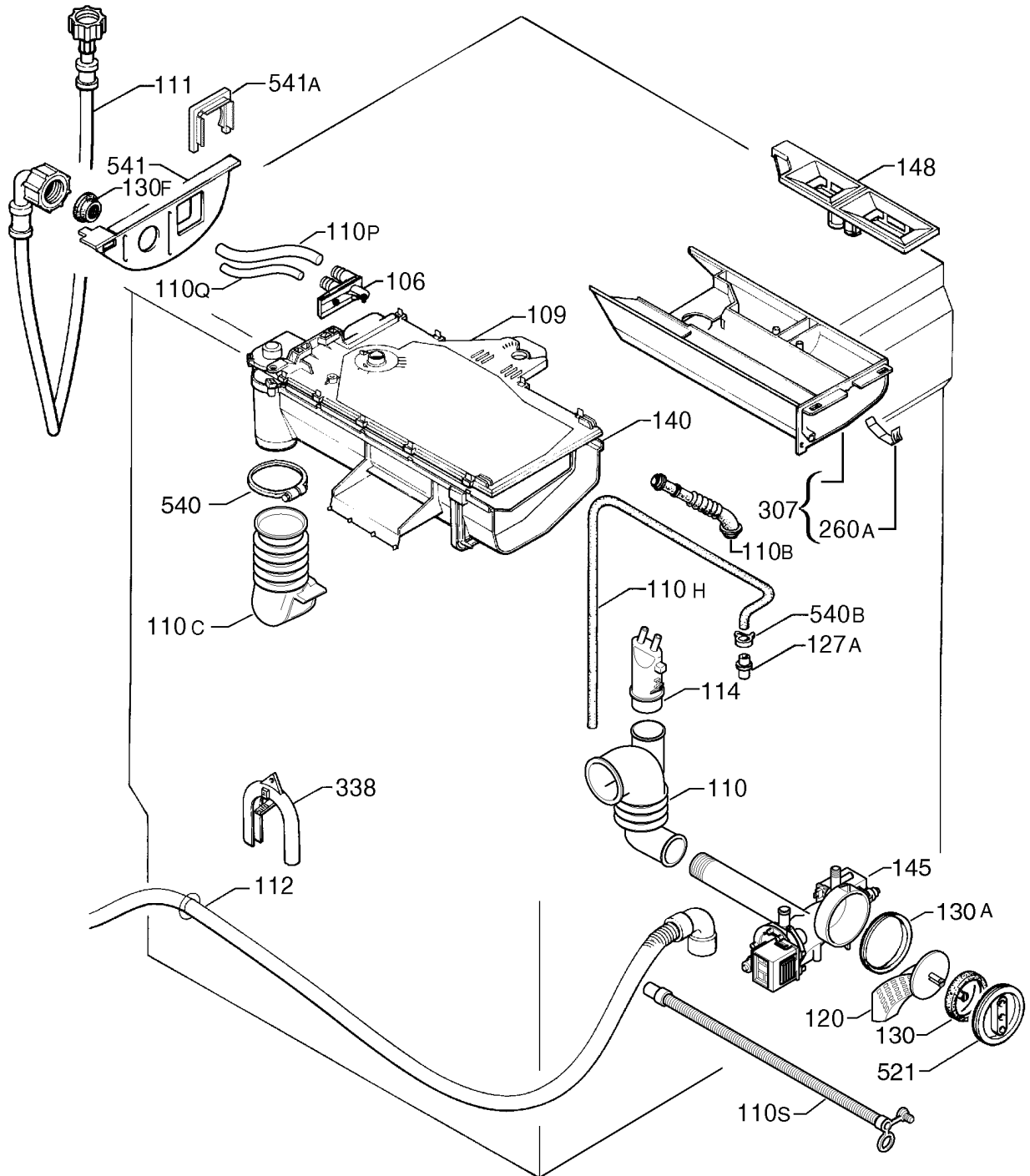
**IMPORTANT!** No configuration has been performed on the PCB. For its configuration please use the code no. 990 (it is not a spare part).

**ACHTUNG!** Die Elektronik wurde nicht konfiguriert. Die Konfiguration wird durch die Code 990 ausgeführt (es andelt sich nicht um ein Ersatzteil).

**ATTENTION!** le module électronique n'a pas été configuré. Pour sa configuration utiliser le code 990 (il ne s'agit pas d'une pièce de rechange).

<b>A</b>	<b>PNC</b> 914513029	<b>Model</b> IZ12
----------	-------------------------	----------------------

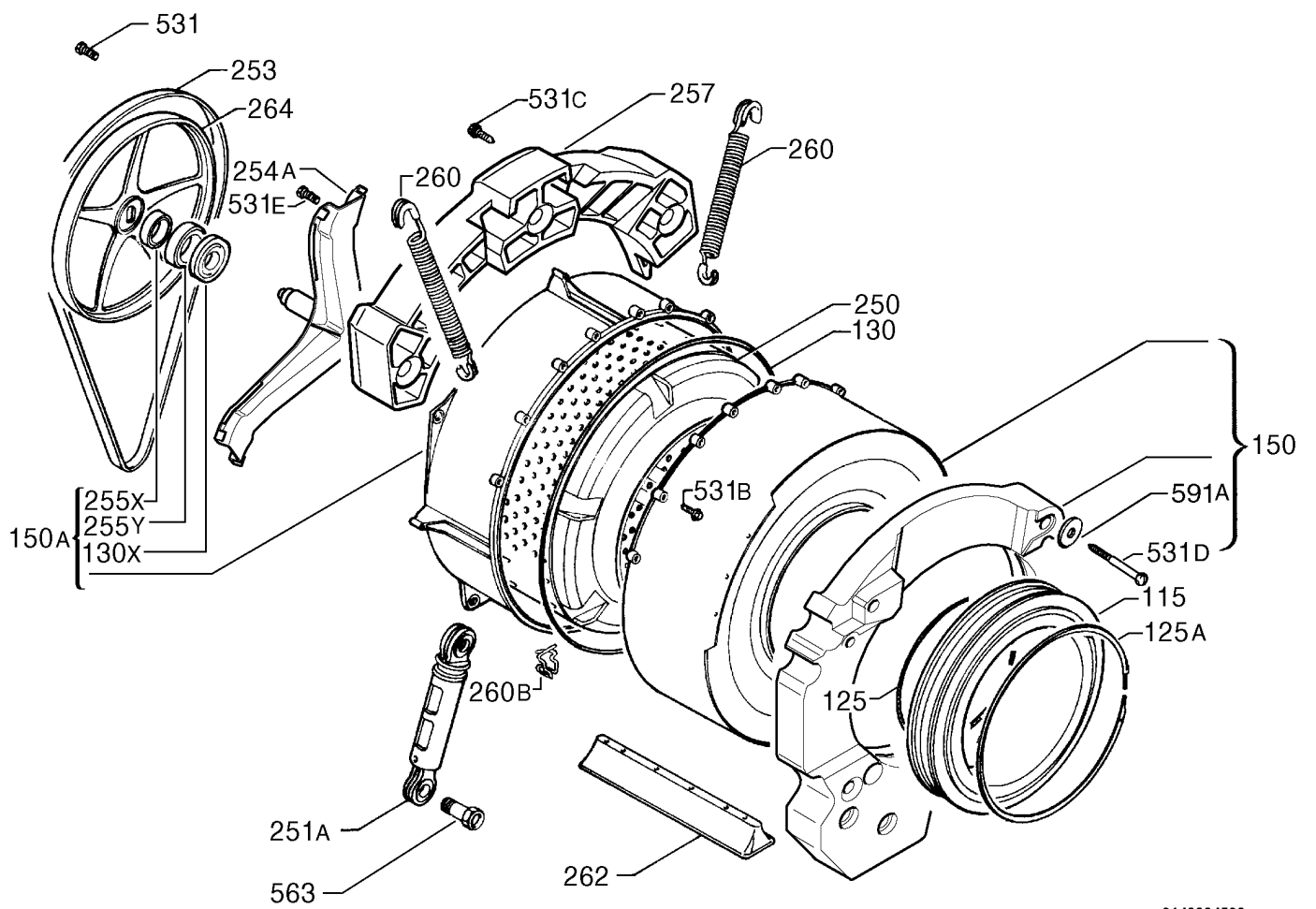
<b>Pos</b>	<b>Part No.</b>		<b>Description</b>
004	1242 12 301 / 4	A	commutator motor,1150 SOLE
005	1249 47 100 / 2	A	electric valve,2VIE A/F ELBI
006	1242 52 940 / 0	A	drain pump,+prot ASKOLL
006A	1320 15 600 / 1	A	circulation pump,220/240V50HzASKOLL
007	1249 67 510 / 7	A	delayer,porthole
010	1320 01 800 / 3	A	heater,230V/1950W IRCA
011	1240 34 360 / 6	A	filter,anti-interference
012	1243 90 510 / 4	A	pressure switch,safety heater
012A	1243 04 202 / 3	A	analogic pressure switch,ELBI
013A	1245 40 600 / 2	A	push botton board
019	50223 56 200 / 5	A	control lamp,ON/OFF
019A	50261 20 600 / 2	A	control lamp,porthole
037	1240 20 930 / 2	A	cable block
048C	1242 94 000 / 3	A	Probe,temperature,NTC SIEMENS
109	1320 15 500 / 3	A	conveyor,Lamp
110	1249 01 630 / 2	A	assembly,Hose,pressure switch,NEAT
125B	50221 74 700 / 4	A	locking ring,o-ring,Pump,(29,82)
130	1243 99 800 / 0	A	sealing sleeve,Sensor
130B	1320 14 500 / 4	A	gasket,coat,main motor
531C	1240 22 200 / 8	A	Screw,main motor,bob
550	1240 07 510 / 9	A	Protection,delayer,porthole
550A	1320 16 110 / 0	A	coat,drain pump,NEAT
550B	1320 07 001 / 2	A	coat,main motor
550C	1320 16 600 / 0	A	guard,recirculation pump,NEAT
587	1243 04 037 / 3	A	Electronic module,not configured,WM AC NEAT EWM2(
587A	1320 14 004 / 7	A	assembly,user interface board,NEAT (HIGH)
597	1240 06 200 / 8	A	stopper,Capacitor,Cable
990	1320 38 050 / 2	A	configuration,AE1C101AA1B502AE
999	1241 10 500 / 4	A	Harness
	1243 40 400 / 9	A	Harness,earth
	1249 01 231 / 9	A	supply cable,2000x3x1'5
	1249 33 150 / 3	A	Harness,FLAT CABLE
	1249 61 710 / 9	A	Harness
	1249 63 510 / 1	A	Harness
	1320 20 000 / 7	A	Wiring
	1320 20 101 / 3	A	Harness
	1320 20 201 / 1	A	Harness
	1320 20 300 / 1	A	Harness



9143004093

A	<b>PNC</b> 914513029	<b>Model</b> IZ12
---	-------------------------	----------------------

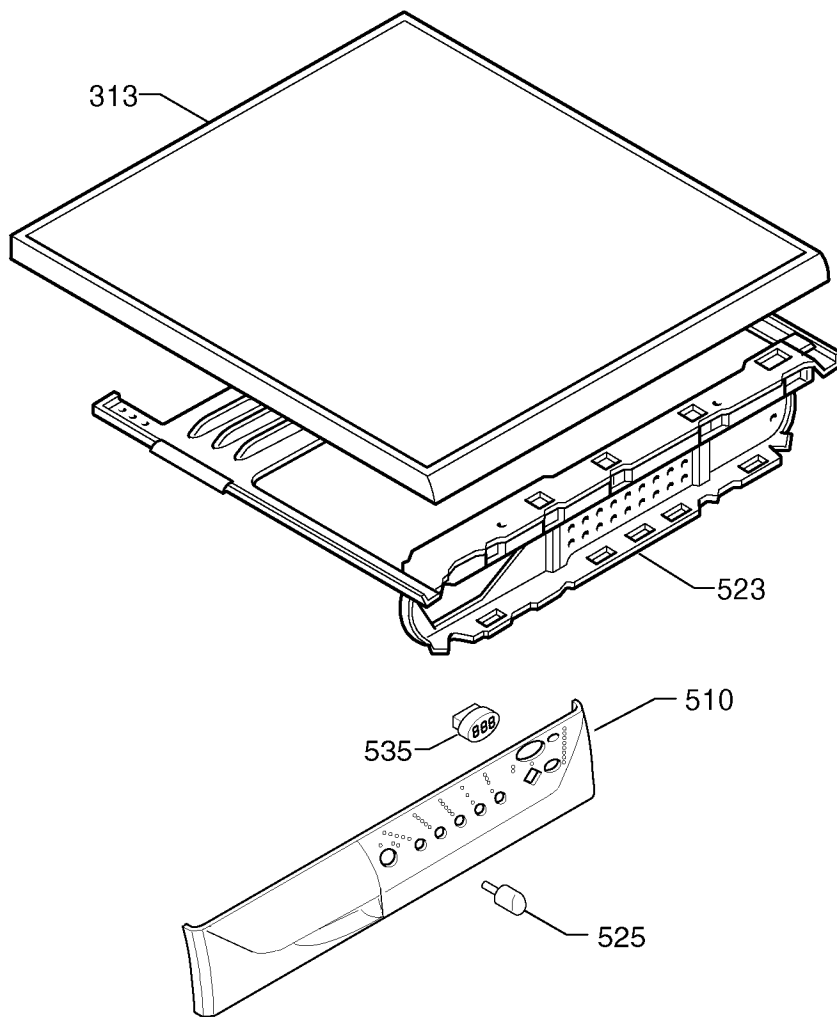
Pos	Part No.		Description
106	1249 47 010 / 3	A	connector,2-ways,3 SCOMP.
109	1240 14 620 / 7	A	conveyor,water,Container cup
110	1320 05 700 / 1	A	drain hose,tub,filter
110B	1240 16 240 / 2	A	vent hose,steam
110C	1320 05 600 / 3	A	Hose,fill,detergent
110H	1320 06 801 / 6	A	Hose,circulation,porthole,NEAT
110P	1249 47 480 / 8	A	Hose,electric valve,Container cup,D=10 NEAT E/2V
110Q	1249 47 460 / 0	A	Hose,Solenoid valve,Container cup,D=12
110S	1320 36 500 / 8	A	Pipe,water outlet,filter,NEAT
111	1245 07 844 / 7	A	inlet hose,water
112	1240 88 110 / 0	A	discharge pipe,L=2370
114	1240 83 223 / 6	A	air chamber
120	1320 06 101 / 1	A	filter,NEAT
127A	1240 00 100 / 6	A	tube connection,circulation
130	1240 14 900 / 3	A	sieve seal
130A	1320 06 001 / 3	A	gasket,filter body
130F	1240 15 100 / 9	A	sealing
140	1248 27 220 / 3	A	dispenser,detergent
145	1320 05 900 / 7	A	filter body,NEAT
148	1246 13 601 / 2	A	syphon,ADD.3SC.
260A	1248 16 400 / 4	A	Spring,detergent drawer
307	50245 08 500 / 1	A	Kit,detergent drawer,Spring
338	1242 91 600 / 3	A	end piece,Drainage hose
521	1240 08 614 / 8	A	Bung,closure,filter
540	1240 06 000 / 2	A	hose clamp,D=64
540B	1242 68 200 / 1	A	hose clamp,Hose,circulation
541	1246 08 620 / 9	A	Cable clamp,Back panel
541A	1247 34 103 / 3	A	Holder,Solenoid



9143004593

<b>A</b>	<b>PNC</b> 914513029	<b>Model</b> IZ12
----------	-------------------------	----------------------

<b>Pos</b>	<b>Part No.</b>		<b>Description</b>
115	1320 04 182 / 3	A	rubber bellow,porthole,DS/NEAT
125	1320 02 400 / 1	A	fixing spring,rubber bellow,tub,BD
125A	1320 55 200 / 1	A	connection ring,rubber bellow,cabinet,BD
130	1240 15 903 / 6	A	gasket,shell,tub
130X	1249 68 500 / 7	A	gasket,drum shaft
150	50261 24 800 / 4	A	Kit,tub,front,NEAT
150A	1320 09 520 / 9	A	tub,back,complete,JSS 1000 1T
250	1320 04 513 / 9	A	drum,complete,45L 1000-1200 1/min
251A	1240 17 251 / 8	A	cushion,NEAT 60N
253	1240 21 150 / 6	A	belt,rubber,1196 J5
254A	50253 01 600 / 5	A	assembly,bearing spider,Bush
255X	50653 82 500 / 5	A	bearing,back,30X62X16
255Y	50061 40 800 / 6	A	bearing,front,25x52x15
257	1243 09 400 / 8	A	bob,back,5,5Kg
260	1240 19 540 / 2	A	Spring,suspension,tub
260B	1320 06 301 / 7	A	Spring,cradle,heater,NEAT
262	50252 27 100 / 7	A	Kit,drum paddle,45L
264	1249 69 110 / 4	A	pulley,1100-1200 1/min
531	50228 35 500 / 9	A	Screw,pulley
531B	1242 72 500 / 8	A	Screw,lock,tub
531C	1249 65 900 / 2	A	Screw,Counterweight,back
531D	1245 71 700 / 2	A	Screw,bob,front,8X59 TSP/TORX
531E	1240 22 000 / 2	A	Screw,bearing spider
563	1240 04 121 / 8	A	bolt,cushion
591A	1242 12 210 / 7	A	Washer,bob,front,(21,7x29)



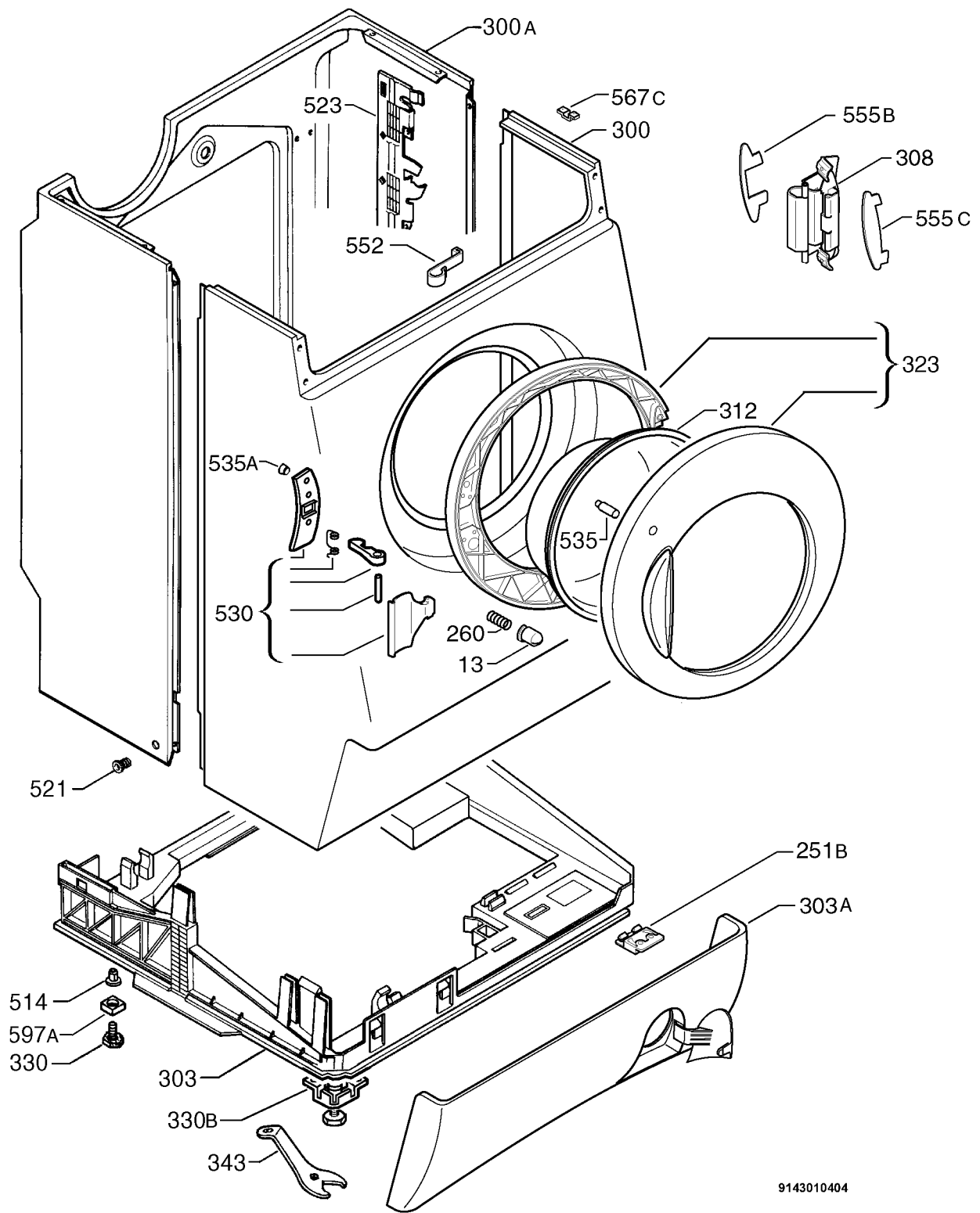
9143001105



---

<b>A</b>	<b>PNC</b> 914513029	<b>Model</b> IZ12
----------	-------------------------	----------------------

<b>Pos</b>	<b>Part No.</b>		<b>Description</b>
313	1243 06 710 / 3	A	work top,NEAT F086
510	1320 36 690 / 7	A	Control panel,complete,silkscreened
523	1320 05 802 / 5	A	Bracket,command
525	1320 10 320 / 1	A	Push button,yellow,ON-OFF NEAT
535	1320 10 001 / 7	A	diffuser,DIGIT NEAT



9143010404

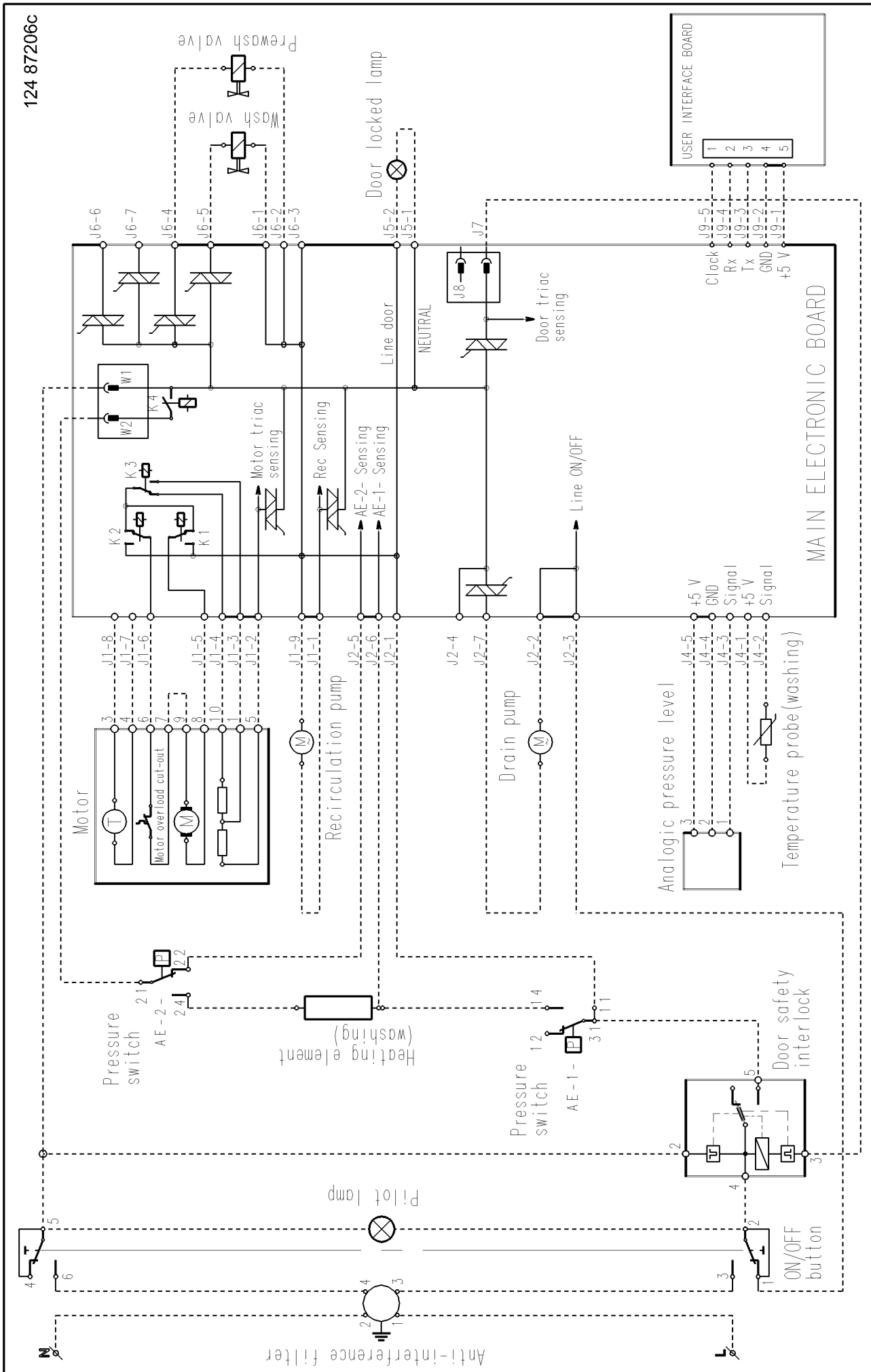
<b>A</b>	<b>PNC</b> 914513029	<b>Model</b> IZ12
----------	-------------------------	----------------------

<b>Pos</b>	<b>Part No.</b>		<b>Description</b>
013	1320 16 300 / 7	A	Push button,safety,porthole
251B	1320 06 200 / 1	A	buffer,cushion
260	1240 67 312 / 7	A	Spring,safety,porthole
300	1320 15 110 / 1	A	cabinet,front,NEAT V/B
300A	1247 77 942 / 2	A	cabinet,back,P62/3/5 V/B
303	1320 04 302 / 7	A	stand,NEAT
303A	1320 11 900 / 9	A	assembly,Base,Flap,NEAT
308	1320 04 401 / 7	A	assembly,Hinge,porthole,NEAT
312	1320 02 201 / 3	A	glass,porthole
323	50266 23 300 / 1	A	Kit,a-frame,porthole,BD NEAT
330	50226 26 200 / 9	A	Kit,Foot,ferrule
330B	1245 26 400 / 5	A	assembly,Foot,front,20mm
343	1246 87 402 / 6	A	key
514	1247 84 200 / 6	A	locking bush,Foot,back
521	1246 44 500 / 9	A	Bung,clamp,cabinet
523	1247 29 400 / 0	A	Bracket,Hose,Harness
530	50261 74 300 / 4	A	Kit,handle,porthole,NEAT
535	1240 07 140 / 5	A	diffuser,control lamp,porthole,C050
535A	1242 38 600 / 9	A	diffuser,Lamp,Door catch
552	1320 06 700 / 0	A	guidance,Hose,circulation
555B	1320 15 900 / 5	A	decor plate,cabinet,DX
555C	1320 15 800 / 7	A	decor plate,Hinge,porthole,NEAT DX
567C	1320 06 900 / 6	A	Bracket,Spring,suspension
597A	1247 12 110 / 4	A	lock,Foot,back
999	1329 99 530 / 0	A	Instruction book,(en-pl-cs-sk)



## P00ZP300000840

Air chamber on filter	Air chamber on filter
Air chamber on tub	Air chamber on tub
Analogic pressure level	Analogic pressure level
Anti-interference filter	Anti-interference filter
Door locked lamp	Door locked lamp
Door safety interlok	Door safety interlok
Drain pump	Drain pump
Earth	Earth
Heating element heart	Heating element earth
Heating elements (washing)	
Heating elements (washing)	
Junction box	Junction box
Main electronic board	Main electronic board
Motor	Motor
Motor earth	Motor earth
Motor overload cut-out	Motor overload cut-out
ON/OFF button	ON/OFF button
Pilot lamp	Pilot lamp
Pressure switch	Pressure switch
Prewach valve	Prewasch valve
Program selector	Program selector
Recirculation pump	Recirculation pump
Temperature probe	Temperature probe
Tub earth	Tub earth
User interface board	User interface board
Wash valve	Water valve main wash
Wire	Wire
Wires	Wires
Blue	Blue
Brown	Brown
Black	Black
Grey	Grey
Green	Green
Green-yellow	Green-yellow
Pink	Pink
Red	Red
Violet	Violet



Anti-interference filter

MAIN ELECTRONIC BOARD

USER INTERFACE BOARD